

Conferences and meetings 2024

Let nature inspire your business.

Holmesglen at Eildon

Conferences • Functions • Events



With one of Victoria's most stunning and beautiful landscapes as a backdrop, Holmesglen at Eildon is the perfect venue choice for your conference or corporate retreat.

Conference spaces that extend outdoors for all your training needs.

Our function rooms, decks and gardens provide you with many conferencing options and all enjoy spectacular views out over the valley towards the Goulburn River and surrounding ranges.

Nestled in a gully behind Barkers Ridge, with the Rubicon State Forest as a backdrop, Holmesglen at Eildon is located on a 660 acre property that features a working cattle farm, agroforestry and a wildlife zone. Lush pastures grazed by our Angus cattle roll down towards Snobs Creek. The facility lies alongside bushland punctuated by rocky outcrops and spectacular views.

Our professional team will work very closely with you to assist with all your event requirements, from catering, to audio visual equipment and beautiful corporate accommodation. With extensive event management experience we understand what it takes to create a truly successful conference.

With small and large conference rooms and several breakout rooms, Holmesglen at Eildon is the ideal location for meetings, conferences, seminars and training sessions. Our purpose built conference venue features three conference rooms in the main centre and two smaller board rooms, each with a full range of audio visual equipment, integrated data projection, free WiFi and smart-boards. Inside, we can accommodate groups of up to 200 people theatre style or 150 for a seated function and our lounges, decks, gazebo and gardens provide conference delegates with numerous breakout spaces and dining options.

The spacious grounds include a sports oval that can cater to larger events with festival marquee and sails erected.

The recreation precinct has a 20 metre swimming pool, a multipurpose floodlit tennis/basketball court and numerous activity options.

Our recreation room offers data projection equipment, free WiFi, and also boasts pool table, table tennis, kitchenette and gazebo with undercover fire pit.

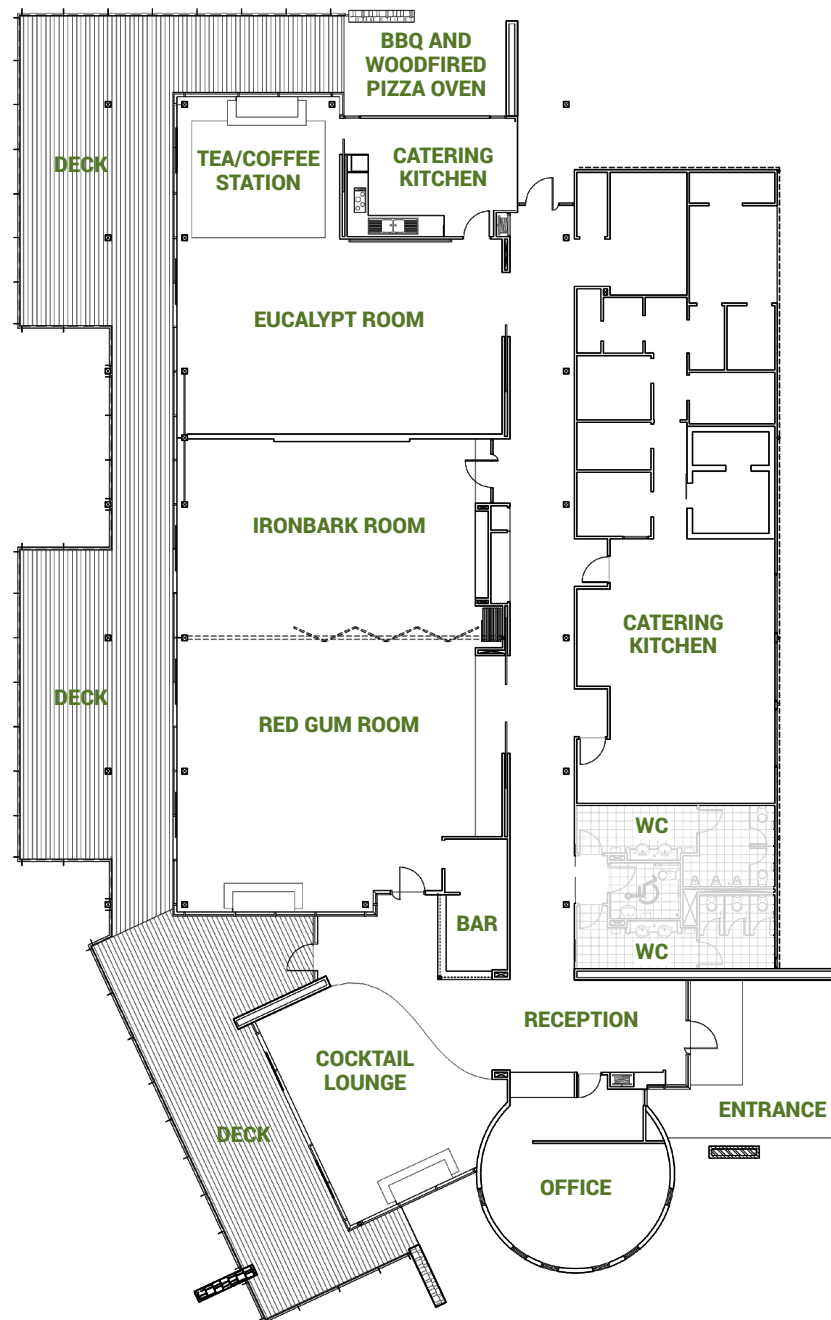
Our seasonal menus are tailor made to suit and we feature the finest local gourmet produce from the Upper Goulburn Valley, including our own farmed Angus Beef.

We offer modern, beautifully presented accommodation and each room has its own spectacular views of the valley below. You can choose from our 4 star corporate king, queen or twin share rooms with ensuites. Or select standard 3.5 star rooms which offer twin, three and four share options to give you a cost saving.

For more intimate meetings, our beautiful Homestead is a convenient and private place for you to stay. It has 8 bedrooms and is fully self-contained and has a large open living area with a dining table that seats 16, open fire, full length verandah, bbq facilities, kitchen and a total of 5 bathrooms to share. It offers uninterrupted views of the surrounding valleys.

Please do not hesitate to contact us directly if we can be of assistance or perhaps you would like to make a time to come and have a look around and see first hand what we have on offer. You can also view our property on Holmesglen's website: www.holmesglenateildon.com

Conference Centre Layout



Conference Centre Specifications

| Guest numbers | | | | | | | | | | |
|---|--|-----------|---------|-----------|---------|----------|------------------|---------------------|----------|---------|
| | Theatre | Boardroom | U-Shape | Classroom | Banquet | Cocktail | Cluster Workshop | Area m ² | Length m | Width m |
| Room Capacity | | | | | | | | | | |
| Red Gum Room | 134 | 44 | 28 | 45 | 98 | 112 | 70 | 112 | 9.6 | 11.7 |
| Ironbark Room | 65 | 22 | 18 | 21 | 48 | 54 | 50 | 54 | 5 | 10.8 |
| Red Gum Room and Ironbark Room | 200 | 70 | 45 | 71 | 140 | 200 | 120 | 178 | 16.5 | 10.8 |
| Eucalypt Room | 99 | 32 | 32 | 33 | 70 | 83 | 50 | 82 | 7 | 11.8 |
| Eucalypt Room and Lounge Room | 99 | 32 | 32 | 33 | 70 | 100 | 110 | 112 | +5 | +6 |
| Recreation Room | 40 | 24 | x | 24 | 36 | 50 | 24 | 86 | 12 | 7.2 |
| Boardroom 006 | 12 | 10 | x | x | x | x | x | 18.5 | 4.3 | 4.3 |
| Boardroom 012 | 12 | 10 | x | x | x | x | x | 18.5 | 4.3 | 4.3 |
| Homestead | 12 | 12 | 12 | 12 | x | x | x | 61.75 | 9.5 | 6.5 |
| Breakout or Cocktail Party Areas (weather dependent) Area Capacity | Capacity (Cocktail) | | | | | | | Area m ² | Length m | Width m |
| Foyer | 14 | x | x | x | x | x | x | 14.5 | 3.8 | 3.8 |
| Lounge | 48 | x | x | x | x | x | x | 48 | 6 | 8 |
| Verandah | 60 | x | x | x | x | x | x | 58 | 14.5 | 4 |
| Deck 1 | 65 | x | x | x | x | x | x | 60.5 | 11 | 5.5 |
| Deck 2 | 65 | x | x | x | x | x | x | 60.5 | 11 | 5.5 |
| Combined Deck | 80 | x | x | x | x | x | x | 180 | 45 | 4 - 5.5 |
| Tennis Court, Gazebo and Oval combined | Catering for up to 1,000 people with marquee/sails erected | | | | | | | | | |

Conference Catering

*All our menus are prepared in house using seasonal produce sourced locally.
We follow a 'low miles' food ethos to ensure our meals are local and fresh.*

FOR CONFERENCE GROUPS STAYING OVERNIGHT

- Conference Room hire and set up is included with stay.
- Additional break out rooms \$150 per day.
- Changes to configuration charged at \$75 per set up.

Corporate Catering Package: \$160 per delegate

- Farmer's Breakfast
- Chef's selected Morning Tea (with freshly brewed coffee)
- Chef's selected Luncheon (seated or packaged)
- Chef's selected Afternoon Tea (with freshly brewed coffee)
- Chef's selected 2 course Dinner (main and dessert)
- Chef's selected 3 course Dinner (entree, main and dessert)
Add \$15 per delegate

Additional Meals to Corporate Catering Package:

- Farmer's Breakfast \$30
- Morning Tea \$12
- Luncheon \$30
- Afternoon Tea \$12
- 2 course Dinner (main and dessert) \$75
- 3 course Dinner (entree, main and dessert) \$90
- All day Tea and Coffee in Conference Room \$15 per person

Prices based on a minimum of 20 guests. Menu subject to change and availability of produce. 10% surcharge if event held on Sunday. 20% surcharge if event held on public holiday weekend.

FOR CONFERENCE GROUPS VISITING FOR THE DAY

- Conference Room hire and set up: \$300
- Additional break out rooms \$150 per day.
- Changes to configuration charged at \$75 per set up.

Day Catering Package: \$60 per delegate/facilitator (when not staying for dinner or overnight)

- Welcome Tea and Coffee with house made biscuits/
savoury quiches
- Informal Luncheon
- Afternoon Tea

Additional extras available with all menus include:

- Choose your own selections from our Menus.
Additional \$30 per delegate per day.
- Chef selected x 3 Canapés, \$10pp, or
- Chef selected x 4 Canapés, \$12pp, or
- Select your own x 3 Canapés, \$15pp
- Cheese Plate – at completion of your meal to enjoy fireside.
Additional \$15 per delegate.
- Please note our Culinary Team specialise in local produce using our 'low miles' food ethos. Should you wish to have a specialty themed event (Mexican night, Moroccan night, Christmas celebration etc) or enjoy our fabulous 'Paddock to Plate Provincial Dinner' or even a Degustation Dinner - we can price all of these accordingly for you.



Prices include GST. Valid 1 January - 31 December 2024

Conference Accommodation

Everything you need, all in one place.

Corporate Rooms – King, Queen & Twin ★★★★★

These rooms are beautifully appointed and presented. Facilities include: Ensuite bathroom, range of guest amenities, hair dryer, linen and towels, television, desk, bar fridge, tea and coffee making facilities, iron and board, air-conditioning and heating. Amazing views from every room. 4 star rating.

\$ 200.00 per room per night - single occupancy

\$ 225.00 per room per night - double occupancy/twin share



Standard Rooms – Quad, Triple & Twin ★★★★★☆

The rooms contain single beds (not bunks) complete with linen and towels. Each sleeping space is separated by a wardrobe. The room facilities include bar fridge, tea and coffee making facilities, hair dryer and guest amenities, iron, air conditioning, heating and fans. There is a central dining table and chairs and individual lockers. The ensuite bathroom area is designed for sharing with a separate shower room, separate toilet and separate vanity. There is no television in standard rooms. Amazing views from every room. 3.5 star rating.

\$ 200.00 per room per night - twin share

\$ 270.00 per room per night - triple share

\$ 320.00 per room per night - quad share



The Homestead ★★★★★

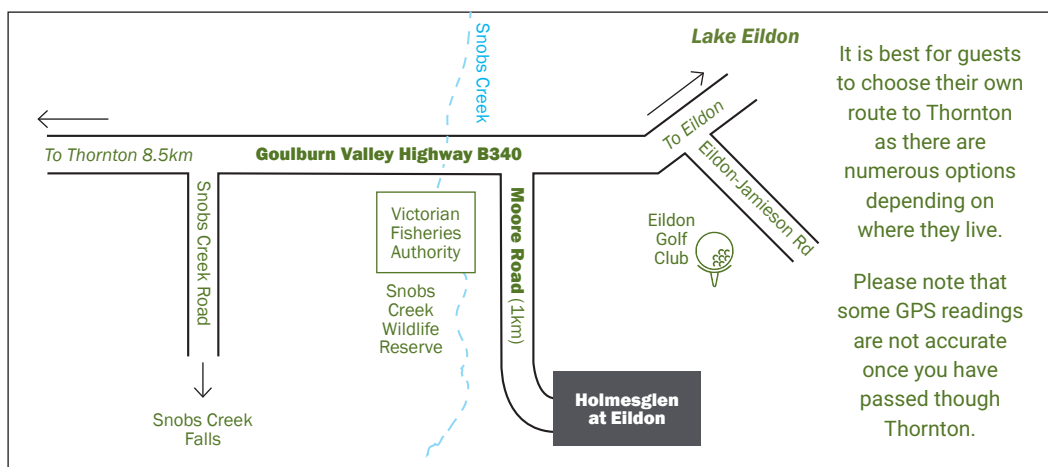
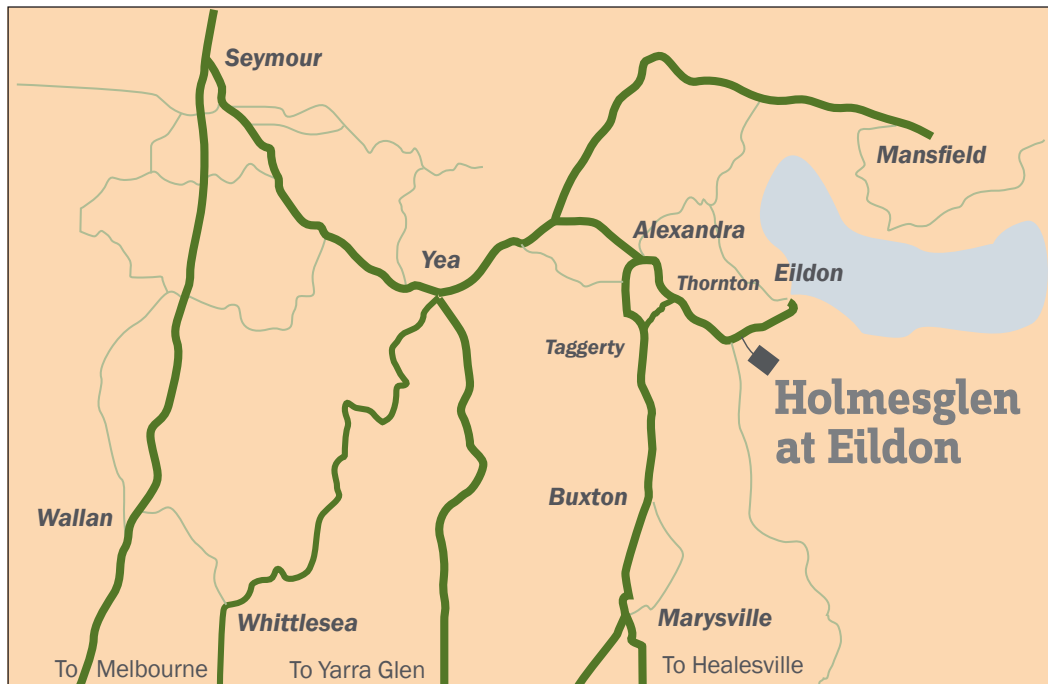
The Homestead is a magnificently appointed house that sits gracefully upon a ridge which offers, what are arguably, the most beautiful views in the valley.

Together with the extension wing, there are 8 bedrooms which share a total of 5 bathrooms and one powder room. It has a well equipped kitchen, laundry, TV room, lounge with fire place and dining room. The house also features a games room with a pool table, table tennis table and dart board. There is an outdoor dining BBQ area. Equipped with air-conditioning and a DVD player, all linen, towels and guest amenities are provided. Ideal for small conference groups or extension to accommodation room numbers for larger groups. 4 star rating.

Prices inclusive of GST. Valid 1 January - 31 December 2024



Just two hours from Melbourne



Pass through the local town of **Thornton** and continue on the Goulburn Valley Highway, in the direction of Eildon, to Snobs Creek where the speed changes to 80 km/h. Continue on the highway for approximately 700 metres past the Snobs Creek Road turn off and you will cross over Snobs Creek small bridge.

Start slowing down at the bridge, as shortly after, you will see the sign on the left hand side of the road; Holmesglen at Eildon, which directs you to turn right onto Moore Road. Drive to the end of Moore Road and through our entrance gate until you reach the intersection, from which you either head straight ahead to the Homestead or left to Main Reception, as indicated on the sign.

Continue along this road for 2km until you reach the Centre. The road veers right at the top of the hill and winds its way along past the Manager's House. Drive with care on this dirt road which is well maintained but can be slippery when wet, and observe wildlife in this area. There is ample parking available.

Holmesglen at Eildon
92 Moore Road, Eildon, Victoria 3713
Mailing: PO Box 9, Eildon, VIC 3713

For bookings and enquiries
T: 03 5774 2631
E: eildon@holmesglen.edu.au
W: holmesglenateildon.com

E4150124 Conferences A4 Brochure for 2024

