

A photograph of the Holmesglen at Eildon building at dusk. The building is a long, modern structure with a dark roof and large glass windows that are illuminated from within, showing a warm orange glow. It is situated on a grassy hillside. To the right of the main building is a large, cylindrical structure with horizontal corrugated metal siding. The sky is a deep blue, and the foreground is a dark green lawn.

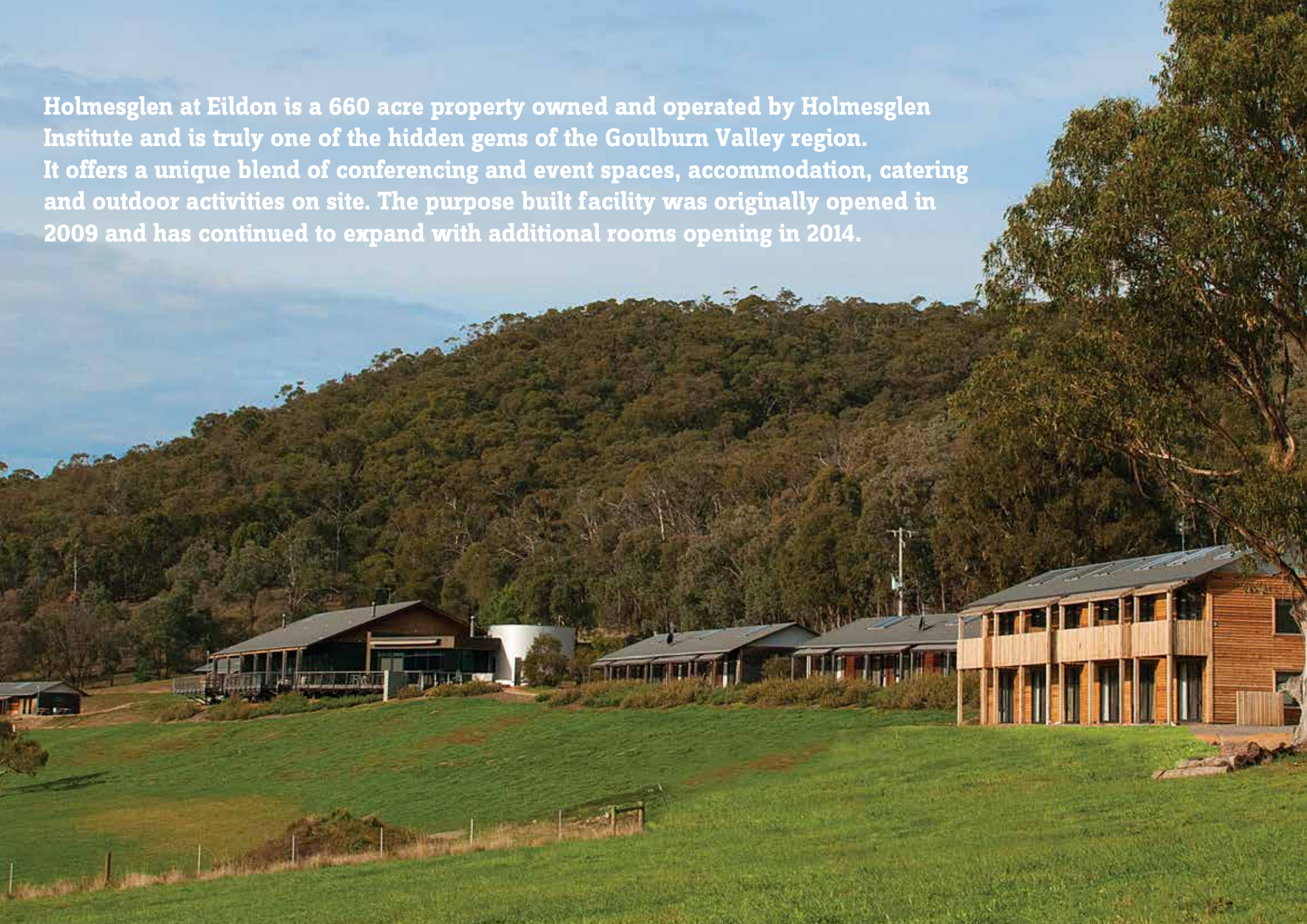
# Holmesglen at Eildon

**Conferences • Functions • Events**

A unique blend of corporate conferencing, event spaces, accommodation and outdoor activities embedded in one of Victoria's most stunning natural landscapes.



**Holmesglen at Eildon is a 660 acre property owned and operated by Holmesglen Institute and is truly one of the hidden gems of the Goulburn Valley region. It offers a unique blend of conferencing and event spaces, accommodation, catering and outdoor activities on site. The purpose built facility was originally opened in 2009 and has continued to expand with additional rooms opening in 2014.**





# Welcome

Nestled in a gully behind Barkers Ridge, with the Rubicon State forest as a backdrop, we are ideally located just two hours from Melbourne. Our property features a spacious modern facility that reflects its natural surrounds with 50 accommodation rooms to suit corporate, private and educational groups. Our facilities can accommodate up to 140 people for a sit down dinner or 200 for a more casual occasion.

We are home to a working cattle farm where Angus cattle graze the lush green pastures, we have our own agroforestry and wildlife zones, and offer many outdoor recreation programs including bush walking, low ropes, mountain biking, canoeing, rafting and fishing. Ideally located with Snobs Creek on one side and the Goulburn Valley rivers and Lake Eildon just a short drive away, there are plenty of options available.

We invite you to drop by, have a look around, join us for one of our seasonal events, or stay awhile and experience all that our venue has to offer.

We look forward to welcoming you,

*The team at Holmesglen at Eildon*







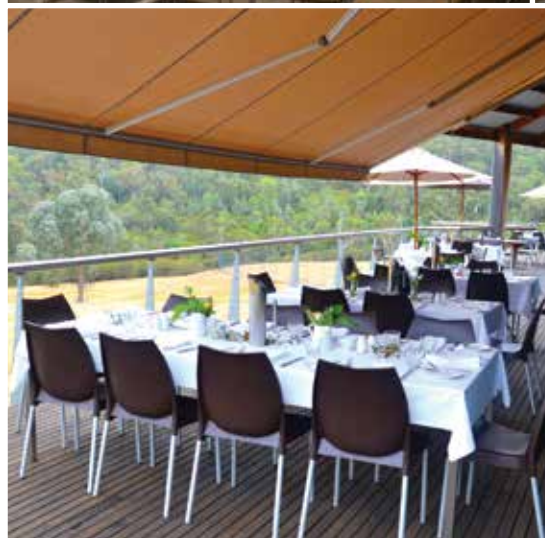


# Conferences

We offer so much more than just a modern conference facility.

With stunning views out over Eildon and surrounding valleys, our venue offers three flexible conference rooms and two smaller board rooms, each with a full range of audio visual equipment and wireless internet.

We can accommodate both large and small groups with a capacity for up to 200 people theatre style and 140 for a seated function. Our facilities are also perfect for the smaller intimate groups, board meetings and workshops for smaller teams. Our lounges, decks, and gardens provide conference delegates with numerous breakout spaces and dining options.









# Functions & Events

No matter what the occasion we have the perfect location and venue.

Whether it is a social club get away, anniversary celebration, family reunion, birthday or fund raiser, our function rooms, decks and gardens provide you with a variety of spaces to suit. We cater for groups of 12 or more and our professional team work closely with you, taking care of all the details, to ensure you have a seamless function. From a relaxed cocktail party to a fully-seated formal event we offer menus and entertaining spaces to match.

For those looking for something a little different we have a number of outdoor recreation facilities with activities available, run by our professional team. For more information, see our Activities and Facilities page.









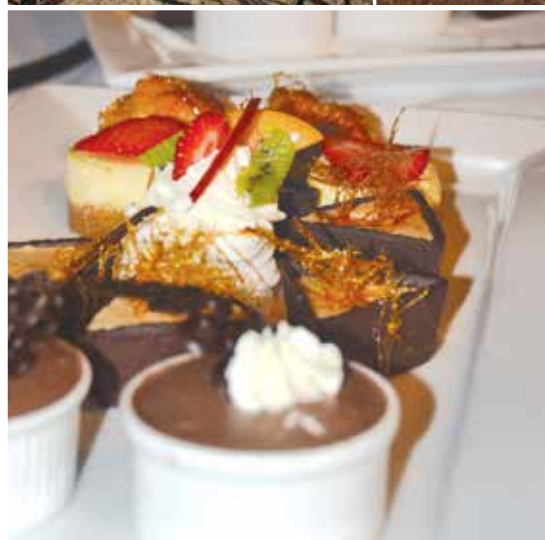
# Weddings

Landscapes and beautiful views make a perfect backdrop for your special day.

With one of Victoria's most stunning and beautiful landscapes as a backdrop, and views that stretch as far as the eye can see over Eildon and the surrounding ranges, we are the perfect venue choice for your wedding day. Whether you are planning an intimate ceremony, relaxed cocktail party or a fully-seated formal event our professional team will be there to guide you and take care of all the details.

At our venue your wedding can be a weekend event with friends and family. We offer modern, beautifully presented accommodation for up to 110 guests and each room has a view of the valleys below. Your guests can choose from our corporate king, queen, or twin rooms or our standard rooms are great for families with four single beds and private bathroom facilities.

In addition, we can also offer you our Homestead accommodation for up to 16, a great option for your immediate family or bridal party.









# Accommodation

Rooms with a view that are modern, beautifully presented and blissfully quiet.

For overnight stays, or longer, there is a range of accommodation options to suit your requirements for up to 120 guests. The rooms all have spectacular views of the valleys below.

## Corporate rooms include:

King, queen or twin all have ensuite bathrooms, with guest amenities, hair dryer, television, desk, bar fridge, tea and coffee making facilities, iron and ironing board. All have ceiling fans, heating and reverse cycle air conditioning.

## Standard rooms include:

Private bathroom facilities, full linen and towels, tea and coffee making facilities, guest amenities, hair dryer, iron and ironing board, heating and ceiling fans as well as a central dining table and chairs.









# The Homestead

An ideal property for family, friends and colleagues to come together.

Our Homestead is the original farmhouse of the property and has been tastefully renovated and extended to accommodate up to 16 guests. With sweeping views of the surrounding valleys, the Homestead is blissfully tranquil and the perfect place to unwind and rejuvenate. It boasts a large living area with open fireplace, TV room, separate games room and the full length veranda, ensuring everyone has their own space. The kitchen is fully equipped for self-catering with two fridges and walk in pantry for all your supplies.

There are two BBQ's on the deck for a self-catered casual meal with a view, or we can arrange for our Chef to prepare a special meal to make it a truly memorable and relaxing experience.

The Homestead has a total of eight bedrooms, with seven of them offering a queen size bed, one with additional single, and one twin room. There are five bathrooms and six toilets to make sharing a breeze.









# Catering

Culinary experiences that will not disappoint await you at Holmesglen at Eildon.

The Goulburn Valley is an abundant food bowl and we feature the finest local gourmet products including wines, olives, trout, and our own farmed Angus beef. Freshly grown produce from the local area, including our own kitchen gardens, is always on our seasonal menus.

We work closely with local providers to ensure our commitment to low miles produce and paddock to plate fare. Select from our extensive seasonal menus or let our local team customise menus and dining options to suit your needs and tastes.

At Holmesglen at Eildon anything is possible. During the day, fresh healthy food and refreshments will keep you focused. At night why not unwind in front of the fire with one of the region's elegant textural reds, or simply drink in the view while our Chefs tantalise your tastebuds and our Food and Beverage team offer the personalised service for which we are renowned.









# Activities & Facilities

Rafting, mountain bike riding, high and low ropes, horse riding, archery, canoeing and much, much more!

Our outdoor programs allow guests to immerse themselves in the beautiful environment, through fun and challenging activities.

The spacious grounds include a 20 metre swimming pool, archery course, sports field and camp fire area. The recreation precinct offers a recreation room with pool table, table tennis, movies, table games, gazebo and an undercover campfire area. This adjoins a multipurpose court, which is under lights for tennis, basketball, netball and volleyball. If you prefer, there are a number of self-guided walks on the property ranging from 20 minutes to two hours.

The activity options include river rafting, mountain bike riding, low and high ropes, horse riding, archery and canoeing, to name just a few. All are supported by our team of professional outdoor recreation staff.

Our programs can be tailored for educational and personal development outcomes or they can be fun, recreational, relaxing or all of the above. Programs can be as long as a day or two, or as short as 20 minutes and are matched to the interests, skills and fitness levels of your group.









# Student Groups

Challenges, rewards, personal growth, curriculum links, leadership development, and adventure - some of the tailored student group outcomes at Holmesglen at Eildon.

There are definitely no bunk beds or queuing for the bathroom at Holmesglen at Eildon. All of the student accommodation is modern, spacious and designed to take student cohabitation to a more comfortable level.

Quad rooms feature four single beds that are separated discreetly for privacy all with full linen and towels. Each quad room features separate toilet, shower and vanity facilities. All rooms have heating and ceiling fans plus a central dining table and chairs.

For teachers, there are the beautifully appointed corporate rooms - king, queen or twin. All have ensuite bathrooms, hair dryer, television, desk, bar fridge, tea and coffee making facilities, iron and ironing board, fans, air conditioning and heating.

We offer a series of programs and activities that immerse students in a beautiful country environment while they take part in safe, adventurous and most importantly fun outdoor recreation activities. Rafting, low ropes, archery, horse-riding and mountain biking are just a few. Talk to our team to put a personalised program together for your group.









# Holmesglen at Eildon Walks



## Forestry Road Walk

**Symbol Colour:** Yellow  
**Average Walk Time:** 30 minutes  
**Level of Difficulty:** ●●●●●  
**Distance:** 2.6 km  
**Walk Starts:** Heading west back towards 'S' bends  
**Season:** Walk is open in all seasons, although muddy in Winter.



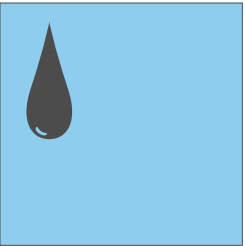
## Farm Road Walk

**Symbol Colour:** Orange  
**Average Walk Time:** 1 hour  
**Level of Difficulty:** ●●●●●  
**Distance:** 4.1 km  
**Walk Starts:** By heading west back towards 'S' bends  
**Season:** Walk is open all year around



## Snobs Hill Lookout

**Symbol Colour:** White  
**Average Walk Time:** 30 minutes  
plus allow 20 minute rest at lookout  
**Level of Difficulty:** ●●●●●  
**Distance:** 2 km  
**Walk Starts:** Heading west back towards 'S' bends  
**Season:** Walk is open in all seasons but take alternative routes to avoid long grass in late Spring and Summer. Speak to staff regarding current conditions.



## Water Walk

**Symbol Colour:** Blue  
**Average Walk Time:** 2 hours  
**Level of Difficulty:** ●●●●●  
**Distance:** 6.5 km  
**Walk Starts:** Heading west back towards 'S' bends  
**Season:** Walk open Spring and Autumn. In Winter, parts of this walk can be under water and in Summer, grass is very long in places. Speak to staff about conditions before heading off.



## Barkers Ridge Rd Walk

**Symbol Colour:** Green  
**Average Walk Time:** 2 hours  
**Level of Difficulty:** ●●●●●  
**Distance:** 4.5 km  
**Walk Starts:** Up behind Building 4, through gate on the southern boundary. Climb over gate or collect key from office.  
**Season:** Walk is not open in Summer due to long grass on tracks. This walk must be lead by an experienced guide from Holmesglen at Eildon as the walk follows a path off the property boundary.



## Barkers Moss Walks

<b>Symbol Colour:</b>	Red		
<b>Short Walk:</b>	20 minutes	<b>Distance:</b>	1.4 km
<b>Level of Difficulty:</b>	●●●●●	<b>Season:</b>	Summer/Autumn/Spring
<b>Medium Walk:</b>	30 minutes	<b>Distance:</b>	2 km
<b>Level of Difficulty:</b>	●●●●●	<b>Season:</b>	Autumn/Spring
<b>Long Walk:</b>	50 minutes	<b>Distance:</b>	4 km
<b>Level of Difficulty:</b>	●●●●●	<b>Season:</b>	Autumn/Winter/Spring
<b>Walk Starts:</b>	At the camp fire site down past the Recreation Room		
<b>Season:</b>	Fungi displays best seen in Winter. Soggy ground can be negotiated in gumboots. <b>Speak to staff about conditions.</b>		







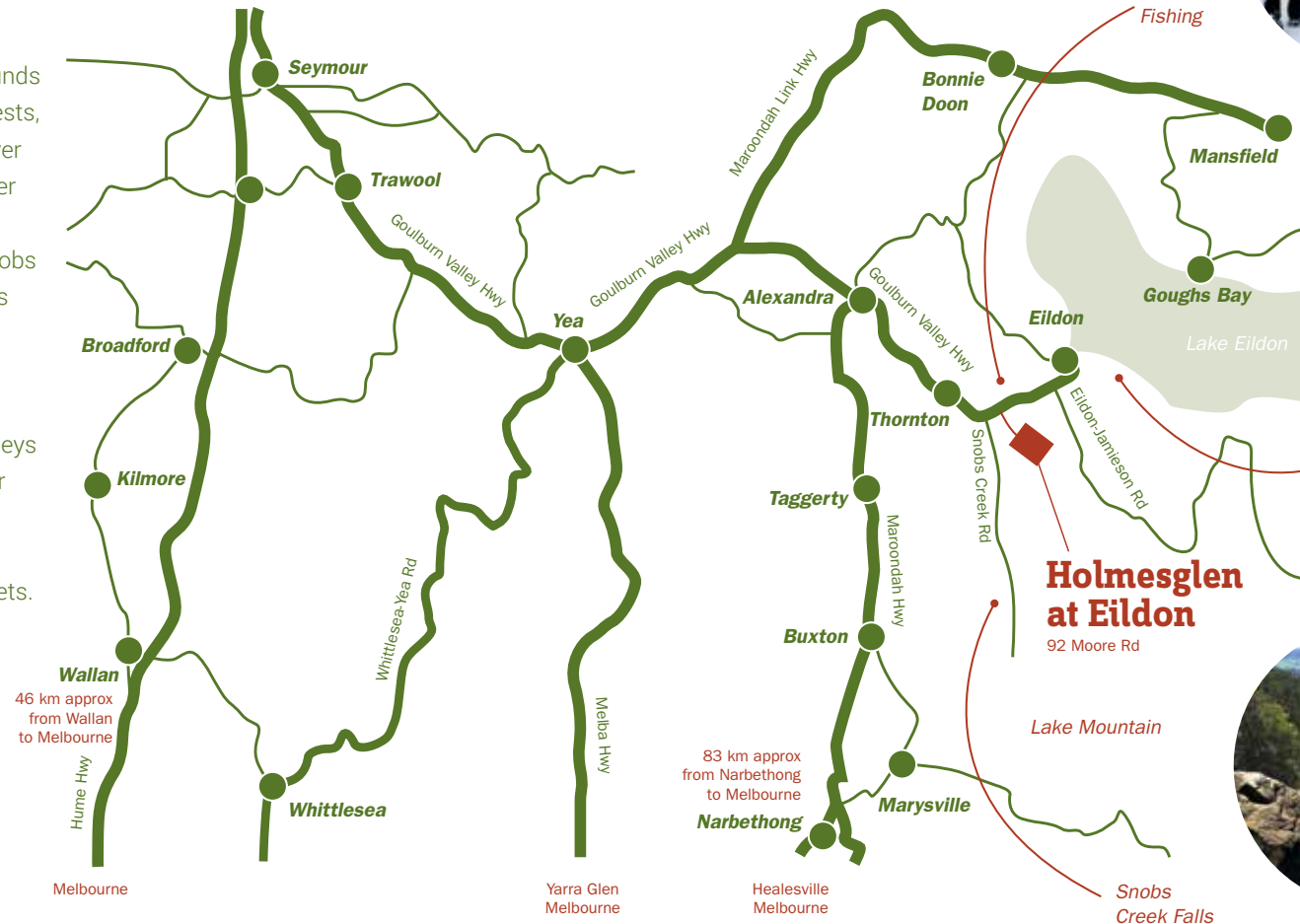
# The local area and how to find us

## There are many things to see and do in Eildon and surrounding areas

Located in the shire of Murrindindi, just two hours from Melbourne - Eildon and its surrounds boast beautiful National parks and State forests, fertile farming land, the pristine Goulburn River and of course Lake Eildon. Six times the water capacity of Sydney Harbor, Lake Eildon is a boating mecca and ideal for trout fishing. Snobs Creek Falls is well worth a visit, and the views from Mt Pinniger are breathtaking.

There are many places of interest to visit dependent on the season from the green valleys to the snow-capped mountains. Drive, bike or hike and discover the area renowned for its produce in many of the neighbouring towns cafes, restaurants, produce stores and markets.

Visit the many events, galleries and artists' studios scattered throughout the towns. Spend more than a day exploring the local cellar doors in the Goulburn Valley region and enjoying some of the world's best local produce.





# Holmesglen at Eildon

Conferences • Functions • Events

**92 Moore Road, Eildon, Victoria 3713**

**Melways Ref: 610 U8**

Mail: PO Box 9, Eildon, Victoria 3713

For bookings and enquiries:

T: 03 5774 2631

F: 03 5774 2483

E: [eildon@holmesglen.edu.au](mailto:eildon@holmesglen.edu.au)

[www.holmesglenateildon.com](http://www.holmesglenateildon.com)

Copyright © 2017 Holmesglen. CRICOS Provider Code: 00012G. TOID: 0416

Educational Media Services B2160517 Eildon Main Brochure



holmesglen